

INDEX

Catalogue

SS Cable Ties 3

Cable Trays 5

**Rubber Mats,
Sheets,
Components 8**

Cable Clamps 14



Rubber Components

We manufacture & offer Carbon Brushes and Rubber Products such as Rubber Sheets, O-rings, Seals & Gaskets. Depending on the application, we produce the best-fit products at affordable prices. We serve many industrial applications, which include electric motors, generators, and other devices. Our products feature good mechanical, physical, and chemical properties.

Rubber Sheets

+

Application

- Rubber sheets are versatile and widely used synthetic rubber materials known for their durability, flexibility, and resistance to wear and tear. They are commonly used in sealing applications, gasket manufacturing, insulation, vibration dampening, etc. These rubber sheets are available in different formulations, thicknesses and colors to suit specific needs.



+

Specification

- **Material:** EPDM, SBR, NBR, Neoprene, Silicone, Viton, Anti Slip Rubber Sheet etc.
- **Colour:** Black, Red, Violet, Yellow, White, etc..
- **Sheet thickness:** 0.5 mm to 10.0 mm
- **Width:** up to 1000 mm
- **Properties:** Good resistance to oils, fuels, mild acids, impact, weathering, abrasion, and various chemicals.

Rubber Mats

+

Application

- **An antistatic rubber mat** is a specialized type of rubber mat designed to dissipate static electricity and prevent electrostatic discharge (ESD) in sensitive environments. These mats are commonly used in industries such as electronics, manufacturing, laboratories, and cleanrooms to protect sensitive electronic components and equipment from static electricity-related damage.
- **Colour** - Multicolor
- **An insulating rubber mat**, also known as an electrical safety mat, is a specialized rubber mat designed to provide electrical insulation and protect against electrical shock hazards. These mats are commonly used in electrical installations, switchboards, control rooms, and other areas where there is a risk of electrical leakage or accidental contact with live electrical equipment.
- **Colour** - Black



Rubber Radiator Hose

+

Application

- Rubber radiator hoses are crucial components in a vehicle's cooling system. They transport coolant between the engine and the radiator, helping to regulate the engine's temperature.

+

Specification

- **Feature:** High Quality
- **Natural Rubber:** Yes
- **Hardness:** - Rigid
- **Ash%:** Nil
- **Colour:** Multicolor



Rubber Automotive Parts

+

Application

- These parts are widely used in the automotive industry for installation in various vehicles like motorbikes, cars, scooters, and machines. The offered parts are manufactured with the help of the latest technology using supreme-grade rubber under the guidance of our dexterous professionals. Available in different specifications, these Rubber Automotive Parts are offered as per the exact need of our clients.
- We also offer these Rubber Molded Parts in various specific options as per the diverse requirements of our clients.

+

Specification

- **Feature:** Easy installation, Durable finish standards



Industrial / Automotive O Rings

+

Application

- We manufacturers, exporters, and suppliers of a comprehensive range of Rubber O Rings that are used for sealing purposes. Offered rings are manufactured in sync with the set quality standards using pioneering technology and optimum-class rubber. Highly used in the automotive, automobile, and electrical industries, these rings are flexible in nature and can be used in dynamic applications.

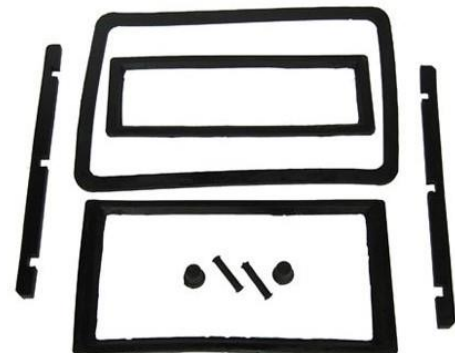


Industrial Rubber Gasket

+

Application

- We are offering our clients a finest quality range of Industrial Rubber Gaskets that are widely used for fill the space between two shafts or an object. These gaskets prevent leakage air, water, oil and chemicals. widely demanded in the automobile, electrical fittings, pipeline fittings and home appliances for their strong construction. Our dexterous professionals manufacture these Industrial Rubber Gaskets by making use of superior-class raw material and ultra-modern technology which ensure the durable finish of the product.





Cable Trays and ladders

We offer a wide range of cable trays and industrial cable trays that are unique in design, simple to install, and cost-effective to use. Because these trays are powder-coated, they are corrosion-resistant and can be used outside. These trays are suitable for supporting a large volume of network wires while also assisting in delivering a smooth transition around obstructions. These trays may be readily affixed to the floor, ceiling, wall, or top of racks and cabinets and are available in a variety of widths, heights, and lengths.

Perforated Cable Trays

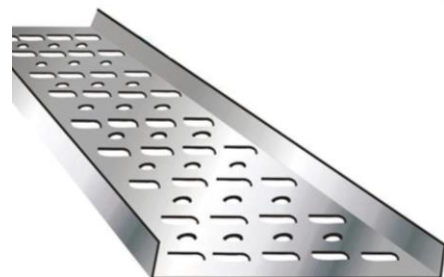
+ Application

- Perforated Cable Trays with openings in the bottom of the trays enable for air circulation, water drainage, and dust fall, and the slots or holes of the ventilation opening can be used for small cable entry/exit. Available in several types, these perforated cable trays are usually fabricated in mild steel which can be further modified as per client's requirements.



+ Specification

- **Material:** Stainless Steel SS 316, SS 304, MS, CRCA Steel, Pre-galvanized steel, Aluminium
- **Finish:** Hot Dip Galvanized, Powder coated, Painted, Pre-galvanized
- **Sheet thickness:** 18 Gauge to 14 Gauge
- **Width:** 50 mm to 1000 mm
- **Height:** 25 mm to 150 mm



Ladder Type Cable Trays

+

Application

- Ladder Cable tray has two side rails connected by rungs. This style of cable tray is useful since the ladder rungs allow easy access to the cables from the top or bottom.
- The rungs of the ladder cable trays serve as suitable anchors for tying down cables in non-horizontal cable tray runs or where cable positions must be maintained in horizontal cable tray runs.



+

Specification

- **Material:** MS, Stainless Steel, Aluminium
- **Finish:** Hot Dip Galvanized, Powder coated, Painted.
- **Thickness:** 2.0 mm to 3.0 mm
- **Width:** 100 mm to 1200 mm
- **Height:** 50 mm to 150 mm
- **Rung Spacing:** 250 mm to 300 mm



Raceway Type Cable Trays

+

Application

- Raceway cable Trays are frequently used in the installation of subterranean cables and wires. We offer our Raceway in single or multi-column configurations for simultaneous installation of one or more cable connections. Our products are widely used in telecommunications, electronics, and electrical firms, among other industries.

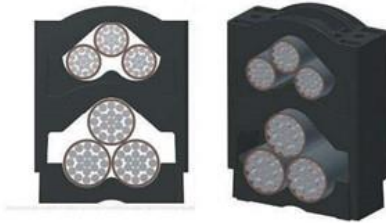


+

Specification

- **Material:** MS, Stainless Steel, GI
- **Finish:** Hot Dip Galvanized, Powder coated, Painted.
- **Thickness:** - 1.2 mm to 3.0 mm
- **Width:** 40 mm to 1000 mm
- **Height:** 30 mm to 100 mm





Cable Guide & Clamps

Our Cable Cleat has been designed, developed, tested and manufactured in accordance with IEC 61914 (cable cleats for electrical installations). It comes in a variety of sizes and can accommodate cables up to 83 mm in diameter. The cleat is made of 30% glass-filled nylon, aluminium and Stainless steel.

+

Application

- Cable clamps assist to organize and secure electrical cables along walls, ceilings, and other surfaces, eliminating damage and clutter.
- Cable clamps organize the many different cables connected with network and server equipment, ensuring that they are neatly routed and conveniently accessible.



+

Specification

- **Material:** Nylon 30 % GF, Aluminium, Stainless steel
- **Colour:** Black, another color available upon request
- **Cable Range:** up to 89 mm
- **Application:** For indoor and outdoor cable installations



www.crowninternational.co.in

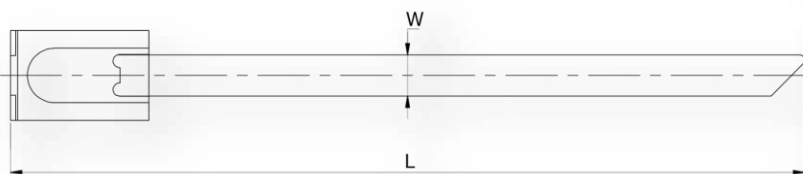
crownint@gmail.com



SS Cable Tie

We offer a wide range of stainless-steel cable ties, including **Ball Lock Steel Tie, Easy Lock Steel Tie, Multi Lock Steel Tie, and Reusable Steel Tie**. We provide these cable ties in both coated and uncoated stainless-steel grades 304 and 316. Our Stainless-Steel Cable Ties are commonly used for bundling and fastening applications in places where vibration, weathering, corrosion, and other variables are a major concern. Stainless Steel Cable Ties are widely used in **cable installations, automotive, power plants, electric cables, aerial support, communication towers, poles and pipes, telecommunications, and other industries.**

Ball Lock Steel Tie (Coated & Uncoated)



+

Application

- Suitable for corrosive climate condition, higher temperature and higher tensile strength requirement.

+

Specification

- **Material:** Stainless Steel **SS 316, SS 304** (Coated & Uncoated)
- **Coating Material:** Black Polyester, Black Nylon, Also available in other colours.
- **Operating Temp:** **-80°C to +150°C** (for coated Tie), **-80°C to +538°C** (for uncoated tie)
- **Packing:** 100 pcs bag
- **Unit:** 100 Pcs/Pkt



Feature

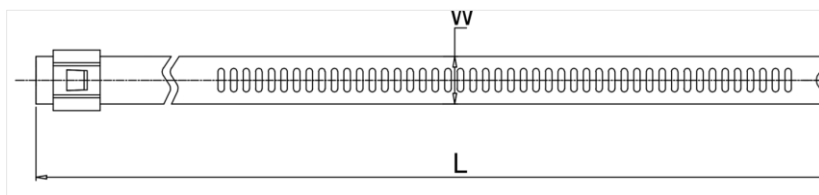
- Ball lock steel ties are self locking. Fast & easy to install.
- When locked on bundles, the ball inside the angled ramp of the head provides positive locking.
- Smooth edges of ties provide utmost safety while installation.
- Coating material is non-toxic, halogen free, low smoke and UV resistant.
- Coated ties provides long term life in corrosive climate condition.



Technical Information

Material	Thickness	Width	Length	Max. Bundel Dia	Loop Tensile Strength	Coating
	mm	mm	mm	mm	kg (lbs.)	Type
SS 316	0.38	4.6	100	25	60 (132)	Polyester
SS 316	0.38	4.6	150	30	60 (132)	Polyester
SS 316	0.38	4.6	200	50	60 (132)	Polyester
SS 316	0.38	4.6	260	70	60 (132)	Polyester
SS 316	0.38	4.6	300	82	60 (132)	Polyester
SS 316	0.38	4.6	360	100	60 (132)	Polyester
SS 316	0.38	4.6	450	130	60 (132)	Polyester
SS 316	0.38	4.6	520	150	60 (132)	Polyester
SS 316	0.38	4.6	610	180	60 (132)	Polyester
SS 316	0.38	4.6	680	200	60 (132)	Polyester
SS 316	0.38	4.6	840	250	60 (132)	Polyester
SS 316	0.38	4.6	1000	300	60 (132)	Polyester
SS 316	0.38	7.9	100	25	170 (375)	Polyester
SS 316	0.38	7.9	150	30	170 (375)	Polyester
SS 316	0.38	7.9	200	50	170 (375)	Polyester
SS 316	0.38	7.9	260	70	170 (375)	Polyester
SS 316	0.38	7.9	300	82	170 (375)	Polyester
SS 316	0.38	7.9	360	100	170 (375)	Polyester
SS 316	0.38	7.9	450	130	170 (375)	Polyester
SS 316	0.38	7.9	520	150	170 (375)	Polyester
SS 316	0.38	7.9	610	180	170 (375)	Polyester
SS 316	0.38	7.9	680	200	170 (375)	Polyester
SS 316	0.38	7.9	840	250	170 (375)	Polyester
SS 316	0.38	7.9	1000	300	170 (375)	Polyester
SS 316	0.38	12.7	200	26	267 (588)	Polyester
SS 316	0.38	12.7	300	58	267 (588)	Polyester
SS 316	0.38	12.7	360	77	267 (588)	Polyester
SS 316	0.38	12.7	520	128	267 (588)	Polyester
SS 316	0.38	12.7	680	179	267 (588)	Polyester
SS 316	0.38	12.7	840	230	267 (588)	Polyester
SS 316	0.38	12.7	1000	280	267 (588)	Polyester
SS 316	0.51	15.9	450	107	400 (882)	Polyester
SS 316	0.51	15.9	610	158	400 (882)	Polyester
SS 316	0.51	15.9	760	206	400 (882)	Polyester
SS 316	0.51	15.9	912	254	400 (882)	Polyester
SS 316	0.51	15.9	1000	282	400 (882)	Polyester

Easy Lock Steel Tie (Coated & Uncoated)



+ Application

- Suitable for corrosive climate condition, higher temperature and higher tensile strength requirement.

+ Specification

- **Material:** Stainless Steel **SS 316, SS 304** (Coated & Uncoated)
- **Coating Material:** Black Polyester, Black Nylon, Also available in other colours.
- **Operating Temp:** **-80°C to +150°C** (for coated Tie), **-80°C to +538°C** (for uncoated tie)
- **Packing:** 100 pcs bag
- **Unit:** 100 Pcs/Pkt

+ Feature

- Easy lock steel ties are self locking with multiple locking systems designed for fast, strong and secure installation
- Smooth edges of ties provide utmost safety while installation.
- Coating material is non-toxic, halogen free, low smoke and UV resistant.
- Coated ties provides long term life in corrosive climate condition.

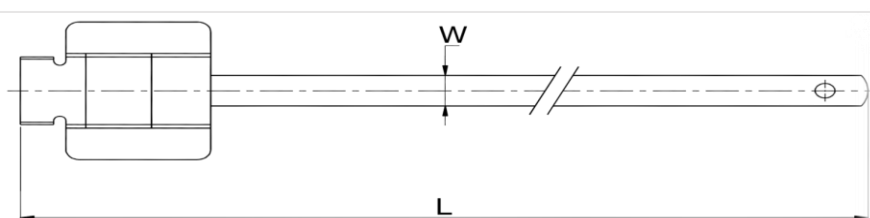
+ Technical Information

Material	Thickness mm	Width mm	Length mm	Max. Bundel Dia mm	Loop Tensile Strength kgs (lbs.)	Coating Type
SS 316	0.40	7	150	35	45 (99)	Polyester
SS 316	0.40	7	200	51	45 (99)	Polyester
SS 316	0.40	7	225	60	45 (99)	Polyester
SS 316	0.40	7	250	65	45 (99)	Polyester
SS 316	0.40	7	300	80	45 (99)	Polyester
SS 316	0.40	7	360	100	45 (99)	Polyester
SS 316	0.40	7	450	125	45 (99)	Polyester
SS 316	0.40	7	600	175	45 (99)	Polyester
SS 316	0.40	7	610	180	45 (99)	Polyester
SS 316	0.40	7	750	225	45 (99)	Polyester
SS 316	0.40	7	1000	300	45 (99)	Polyester



Material	Thickness mm	Width mm	Length mm	Max. Bundel Dia mm	Loop Tensile Strength kgs (lbs.)	Coating Type
SS 316	0.40	12	150	35	111 (245)	Polyester
SS 316	0.40	12	200	51	111 (245)	Polyester
SS 316	0.40	12	225	60	111 (245)	Polyester
SS 316	0.40	12	250	65	111 (245)	Polyester
SS 316	0.40	12	300	80	111 (245)	Polyester
SS 316	0.40	12	360	100	111 (245)	Polyester
SS 316	0.40	12	450	125	111 (245)	Polyester
SS 316	0.40	12	600	175	111 (245)	Polyester
SS 316	0.40	12	610	180	111 (245)	Polyester
SS 316	0.40	12	750	225	111 (245)	Polyester
SS 316	0.40	12	1000	300	111 (245)	Polyester

Reusable Steel Tie (Coated & Uncoated)



+

Application

- Suitable for corrosive climate condition, higher temperature and higher tensile strength requirement.

+

Specification

- **Material:** Stainless Steel **SS 316, SS 304** (Coated & Uncoated)
- **Coating Material:** Black Polyester, Black Nylon, Also available in other colours.
- **Operating Temp:** **-80°C to +150°C** (for coated Tie), **-80°C to +538°C** (for uncoated tie)
- **Packing:** 100 pcs bag
- **Unit:** 100 Pcs/Pkt

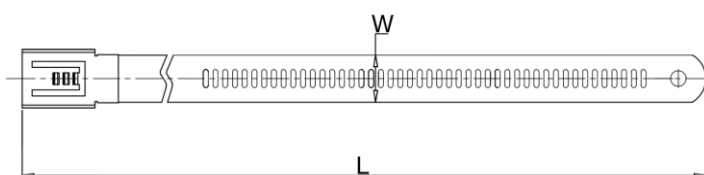
+

Feature

- Reusable steel ties are designed for the quick fastening of cables, tubes, and pipes & also can be unfastened for reuse.
- It is designed to accommodate double wraps.
- Smooth edges of ties provide utmost safety while installation.
- Coating material is non-toxic, halogen-free, low smoke, and UV resistant.
- Coated ties provide long-term life in corrosive climate conditions.

Material	Thickness mm	Width mm	Length mm	Max. Bundel Dia mm	Loop Tensile Strength kgs (lbs.)	Coating Type
SS 316	0.70	6.3	152	32	149 (322)	Polyester
SS 316	0.70	6.3	229	57	149 (322)	Polyester
SS 316	0.70	6.3	305	81	149 (322)	Polyester
SS 316	0.70	6.3	457	130	149 (322)	Polyester
SS 316	0.70	6.3	500	143	149 (322)	Polyester
SS 316	0.70	6.3	610	178	149 (322)	Polyester
SS 316	0.70	9.5	152	32	181 (399)	Polyester
SS 316	0.70	9.5	229	57	181 (399)	Polyester
SS 316	0.70	9.5	305	81	181 (399)	Polyester
SS 316	0.70	9.5	457	130	181 (399)	Polyester
SS 316	0.70	9.5	500	143	181 (399)	Polyester
SS 316	0.70	9.5	610	178	181 (399)	Polyester
SS 316	0.70	9.5	762	227	181 (399)	Polyester
SS 316	0.70	9.5	814	275	181 (399)	Polyester

Multi Lock Steel Tie (Coated & Uncoated)



Application

- Suitable for corrosive climate conditions, higher temperatures and higher tensile strength requirements.

Specification

- **Material:** Stainless Steel **SS 316, SS 304** (Coated & Uncoated)
- **Coating Material:** Black Polyester, Black Nylon, Also available in other colours.
- **Operating Temp:** **-80°C to +150°C** (for coated Tie), **-80°C to +538°C** (for uncoated tie)
- **Packing:** 100 pcs bag
- **Unit:** 100 Pcs/Pkt

Feature

- Multi-lock steel ties are self-locking with multiple locking systems designed for a strong and secure hold.
- It is designed to accommodate double wraps.
- Smooth edges of ties provide utmost safety while installation.
- Coating material is non-toxic, halogen-free, low smoke, and UV resistant.
- Coated ties provide long-term life in corrosive climate conditions.

Material	Thickness mm	Width mm	Length mm	Max. Bundel Dia mm	Loop Tensile Strength kgs (lbs.)	Coating Type
SS 316	0.40	7.0	150	35	60 (132)	Polyester
SS 316	0.40	7.0	225	60	60 (132)	Polyester
SS 316	0.40	7.0	300	80	60 (132)	Polyester
SS 316	0.40	7.0	450	125	60 (132)	Polyester
SS 316	0.40	7.0	610	180	60 (132)	Polyester
SS 316	0.40	12.0	150	35	130 (287)	Polyester
SS 316	0.40	12.0	225	60	130 (287)	Polyester
SS 316	0.40	12.0	300	80	130 (287)	Polyester
SS 316	0.40	12.0	450	125	130 (287)	Polyester
SS 316	0.40	12.0	610	180	130 (287)	Polyester

Tie Tensioning / Cutting tools

Tool Type – CTT1

- For tensions and cuts multi lock, easy lock and ball lock steel ties.
- **Material** –Metal.
- **Suitable for Tie Size** – Up to 7.9mm width.
- Controlled tension & fully adjustable to achieve the desired tension.
- Easy and automatic removal of excess tie length desired tension.
- Light weight, which allows only one hand operation.



Tool Type – CTT2

- For tensions and cuts multi lock, easy lock, and ball lock steel ties.
- **Material** –Metal.
- **Suitable for Tie Size** – Up to 12 mm width.
- Hand-operated the tool with installer-controlled tension and cut-off.
- Rugged, lightweight, easy to operate provides mechanical advantage.



Tool Type – CTT3

- Ideal tool for tensioning and securing multi lock stainless steel cable ties.
- **Material** –Carbon steel.
- **Suitable for Tie Size** – Up to 9 mm width.
- Install and tensions stainless steel cable ties.
- Quick and easy installation.
- Light weight.

